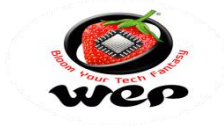




Dear Valuable Customer,

You are a proud owner of Wep Billing Printer. Our machines are easy to operate, effortless & easy to maintain on low running costs. Enjoy our fantastic service spread across the country through well networked Authorized Service Providers. This Technical Communication guide will help you to operate the Machine easily and help you to diagnose and troubleshoot in case of any problem. Regarding any suggestion and feedback e-mail us at [rbp.support@wepindia.com](mailto:rbp.support@wepindia.com)



## INDEX

<b>Sr. NO.</b>	<b>Description</b>	<b>Page No.</b>	<b>DOR</b>
1	User Utility Setup for BP JOY PRO	3-7	15th May 21
2	Items unit configuration in BP Emerge Basic/ BP25T Emerge/BP JOY PRO	8-9	22nd May 21
3	Item database updating Through User Utility in BP JOY PRO	10-13	18 <sup>th</sup> Sep 21



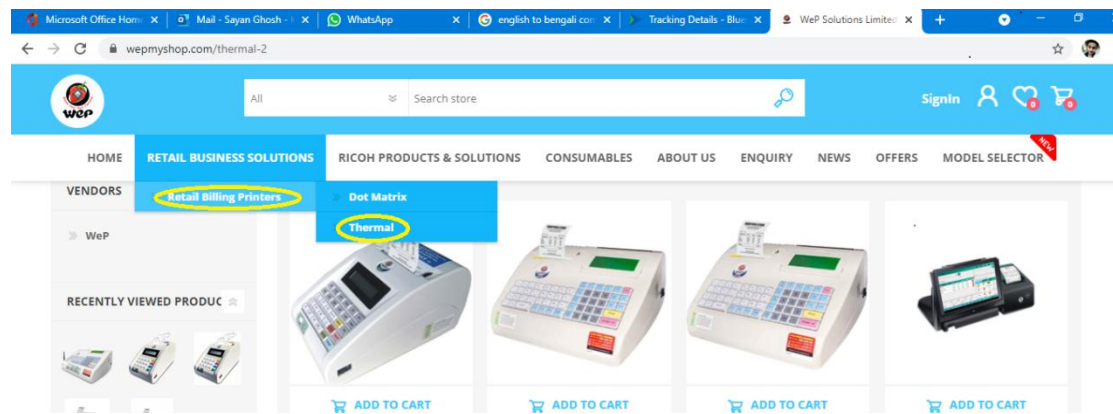
Technical Communication No. 01  
Date of Release: 15<sup>th</sup> May 2021  
Models Covered: BP JOY PRO

## User Utility Setup for BP JOY PRO

**Introduction:** BP JOY Pro is an economic billing printer and our entry level product into RBP Segment. This product is suitable for small shops, Bakeries, Juice Shops and Cafes. This product stores 1100 items of your shop and can have 15 User logins. It can generate 11 kinds of reports which can be downloaded into a USB drive. This Technical communication will help us in Installation of User Utility Setup for BP JOY PRO

### How to Download Utility Setup:

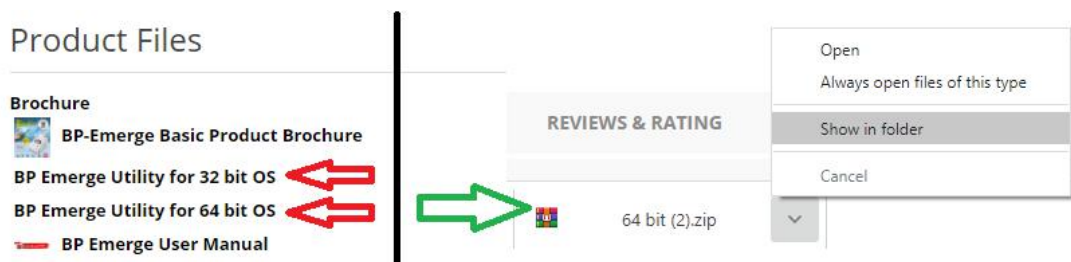
1. Go to “www.wepmyshop.com”, Link-<https://www.wepmyshop.com/bp-joy-pro>



2. Go to RETAIL BUSINESS SOLUTIONS->THERMAL->BP JOY Pro



3. Depends upon your system type (64 bit/32 bit) we have to install the BP JOY Pro utility.



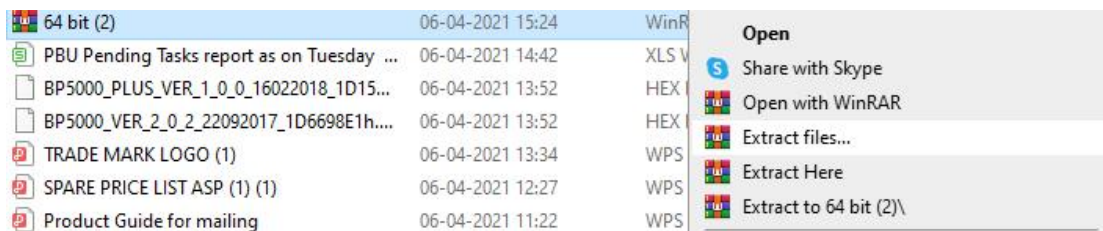


4. We can get Window bit OS System of our PC by Right Click on This PC (Win 8.1,10),My Computer(Win 7) ->Go to properties -> check the System type 64 bit/34 bit.

## Device specifications

Device name	Kol-LPT-SayanG
Full device name	Kol-LPT-SayanG.wepindia.com
Processor	Intel(R) Core(TM) i3-5005U CPU @ 2.00GHz 2.00 GHz
Installed RAM	4.00 GB
Device ID	769C18A6-C2E9-42E7-AE83-530CF4B2E845
Product ID	00330-80000-00000-AA327
System type	64-bit operating system, x64-based processor
Pen and touch	No pen or touch input is available for this display

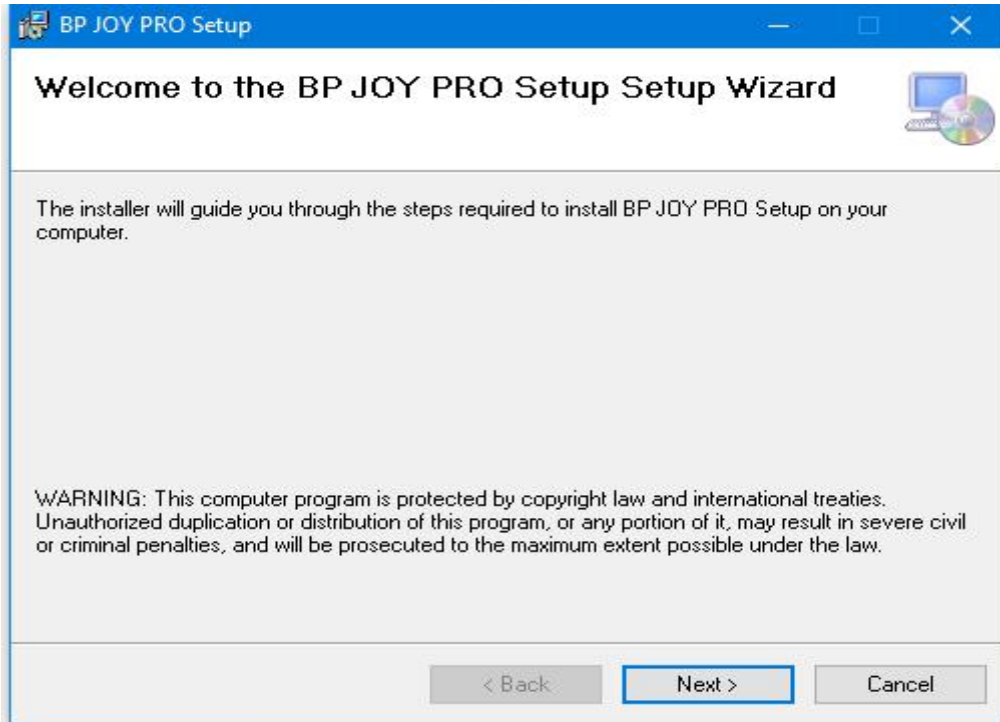
5. After download the utility extract this file...



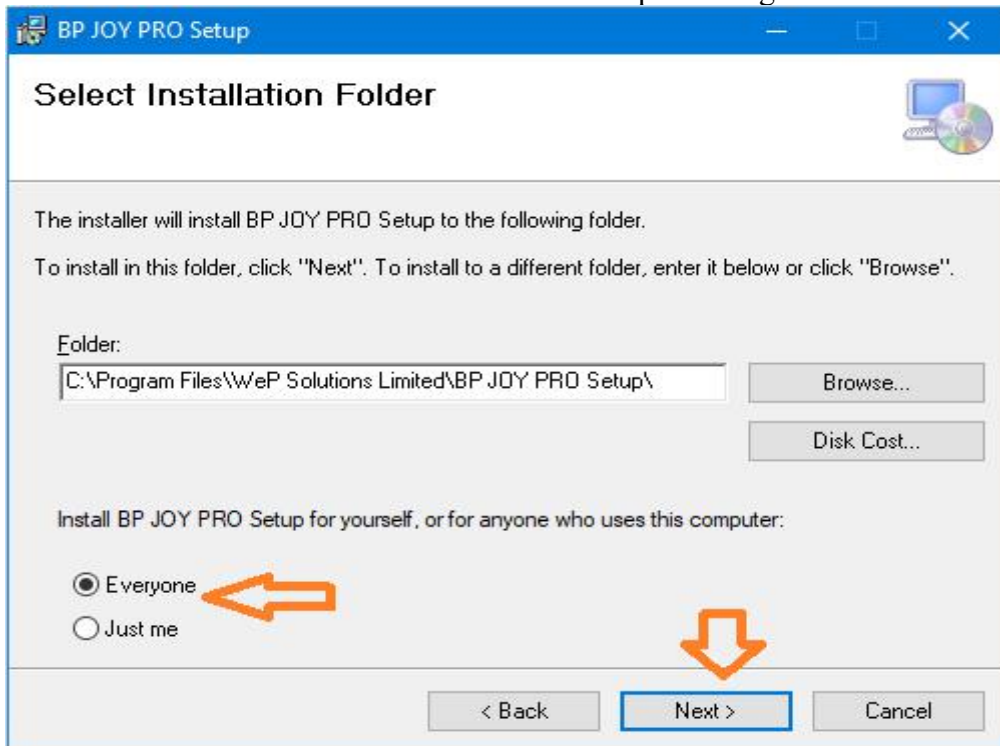
6. In folder it's showing "BP JOY PRO Setup (x64)"



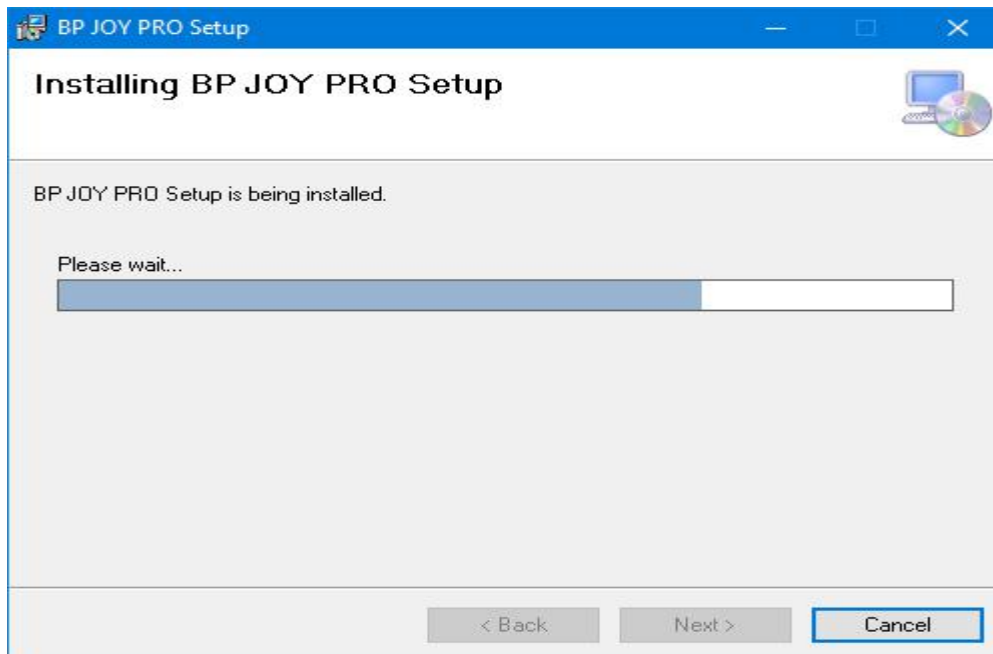
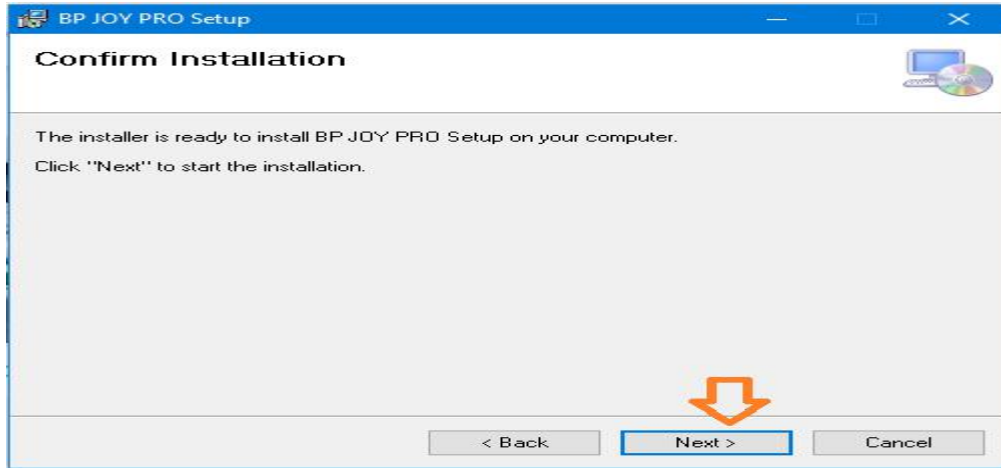
7. Double click in this utility file. It will show as below.

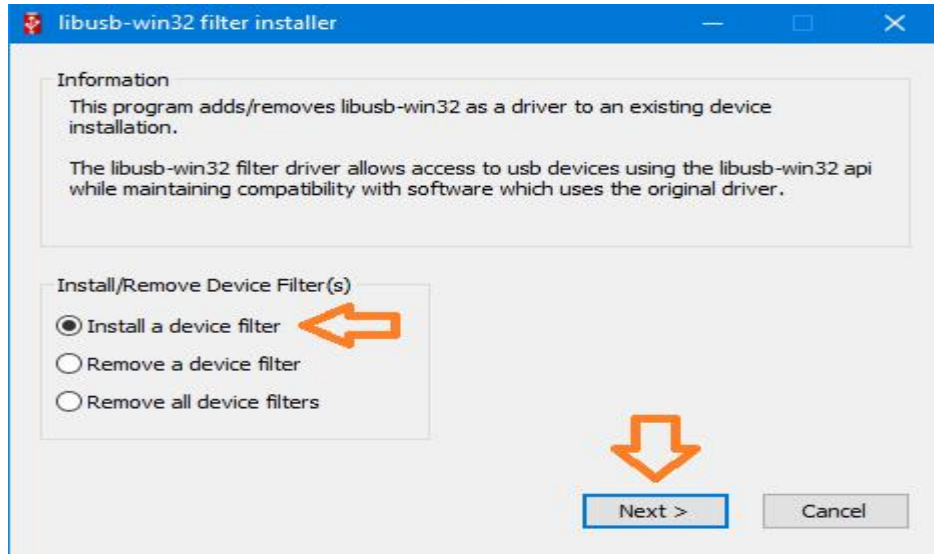


8. Make selections for next and forward for the next processing.



9. Select for “Everyone” and then proceed with “Next” option.





10. Select “Install a device filter”, then “Next”.

11. Select “USB Printing Support” and install this..

11. Then installation will complete and a Pop up will occur. Click on CLOSE button and your Utility will be installed.

**For 32 Bit Windows:** For 32 bit windows, we need to install “32 bit” setup

**Procedure:**

Same process. Follow the steps from 1-11.



Technical Communication No. 02  
Date of Release: 22<sup>nd</sup> May 2021  
Models Covered: BP JOY PRO

## Items unit configuration in BP Emerge Basic/ BP25T Emerge/BP JOY PRO

**Introduction:** In our above BP printers we can configure different unit of measurement as per customer requirements. In this technical communication we will go through usage of user utility operations and configuration of unit of measurement.

1. Connect the printer to PC; Put it in data downloading mode and then open user utility for BP Emerge.
2. Remember to run utility in administrator mode.

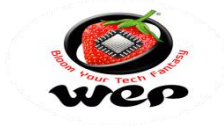
3. Login to utility with selection of language for usage and password as wepindia.
4. Select for item database and it will show display screen for database entry.





5. Go to selection to configure unit and it will display list of units which are already available and we can replace it with required unit of measurement.

6. With selection and enabling of units we can add it in required database Entry.

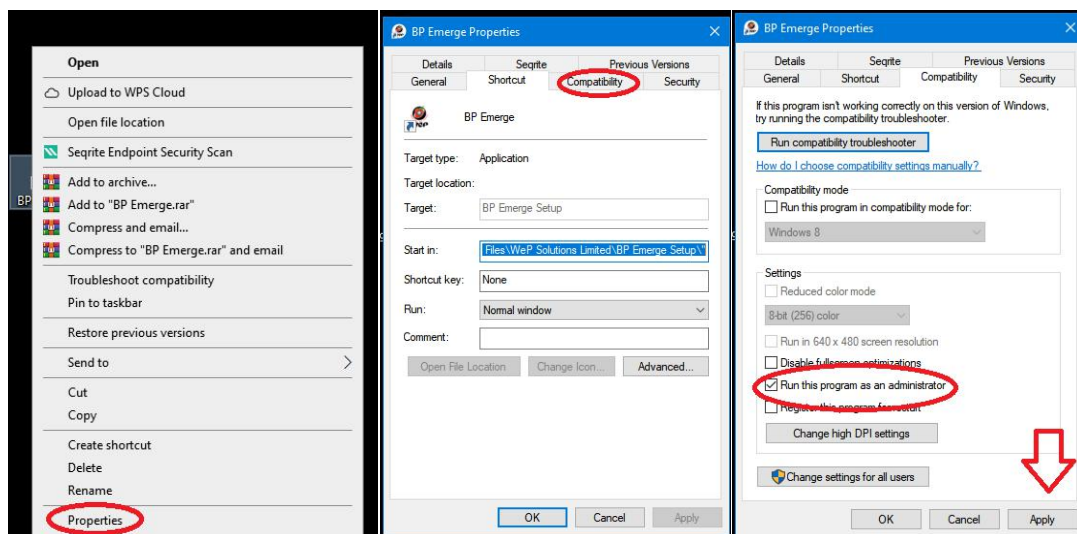


Technical Communication No. 03  
Date of Release: 18<sup>th</sup> Sep 2021  
Model Covered: BP JOY PRO

### Item database updating Through User Utility in BP JOY PRO

**Introduction:** In Our BP printers we can add Item database in bulk through its User Utility. This Technical Communication will guide us how to add item database in Printer with help of its User Utility.

- Open the utility in run as administrator mode-  
Right Click on Utility-Go to properties-compatibility-tick Run as administrator-Apply



- Open the utility. select the language put the password “wepindia” and click on the log in





● Go to the Database

Connection Status : Not Connected to BP JOY PRO

Item Management

Item Number  Item Unit Packet Discount %   
Item Name  Rate  Tax %

Configure Unit Add Modify Delete Download Item

Item Name :  Item Count : 0 Import Export

ID	Item Name	Item Unit	Rate	Discount	Ta
----	-----------	-----------	------	----------	----

Icons by Icons8

● Fill the required sections for database entry and then click on Add option.

Connection Status : Not Connected to BP JOY PRO

Item Management

Item Number 2 Item Unit Packet Discount % 10.  
Item Name MANGO Rate 120 Tax % 18

Configure Unit Add Modify Delete Download Item

Item Name :  Item Count : 1 Import Export

ID	Item Name	Item Unit	Rate	Discount	Ta
1	APPLE	Packet	100	10	18

Icons by Icons8



- Click on Export and save the Excel file.

- Open the Excel file and put the remaining data you want to upload in machine and save this.

Sl.No	Item Name	Item Unit	Rate	Discount	Tax
1	APPLE	Packet	100	10	18



- Now open the utility again, go to database-click on import-select the Excel file.(Make sure the Excel file is close)
- Connect one blank pen drive to pc, Click on Download item and two option is there add item (If you want to add new items),Replace item(if you want to replace previous items and want to add new items) select the option you want then select the pen drive path and click ok.

Regarding any Feedback and queries, kindly reach us on below:

Mail Id: [rbp.support@wepindia.com](mailto:rbp.support@wepindia.com)

Toll Free Number: 8103 500 500

WhatsApp Number: +91-914822412