



Dear Valuable Customer,

You are a proud owner of Wep Billing Printer. Our machines are easy to operate, effortless & easy to maintain on low running costs. Enjoy our fantastic service spread across the country through well networked Authorized Service Providers. This Technical Communication guide will help you to operate the Machine easily and help you to diagnose and troubleshoot in case of any problem. Regarding any suggestion and feedback e-mail us at rbp.support@wepindia.com



INDEX

Sr. NO.	Description	Page No.	DOR
1	User Utility setup Installation for BP Gold 2.0	3-7	07th Oct 20
2	Item database updating through User Utility in BP Gold 2.0	8-12	12 th Jun 21
3	How to update Firmware in BP Gold 2.0	13-14	25 th Sep 21
4	External Printer connectivity to BP Gold 2.0	15-21	25 th Mar 22
5	Firmware updates in BP Gold 2.0	22	11 th Jun 22



Technical Communication No. 01
Date of Release: 07th Oct 2020
Models Covered: BP Gold 2.0

User Utility setup Installation for BP Gold 2.0

Introduction: BP-Gold 2.0 is the latest member of Wep printer’s family which is especially dedicated for Gold Merchants. We are providing many features in this model which are useful for merchants i.e. wastage, purity, labor charges, stone etc. with different parameters. But for that, once need to need the calculations flow of the different features.

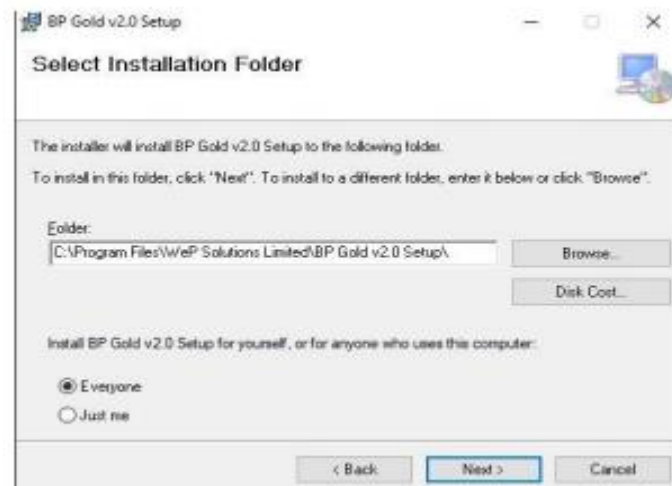
Utility Setup: For 32 Bit Windows: For 32 bit windows, we need to install “BP Gold v2.0 Setup x86” setup.

Procedure:

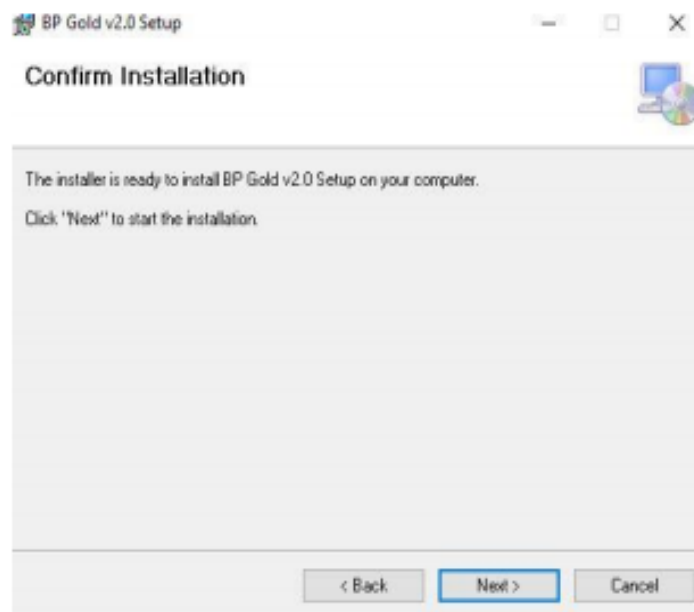
1. Click on the setup.
2. Click on NEXT button.



3. Again Click on NEXT button.

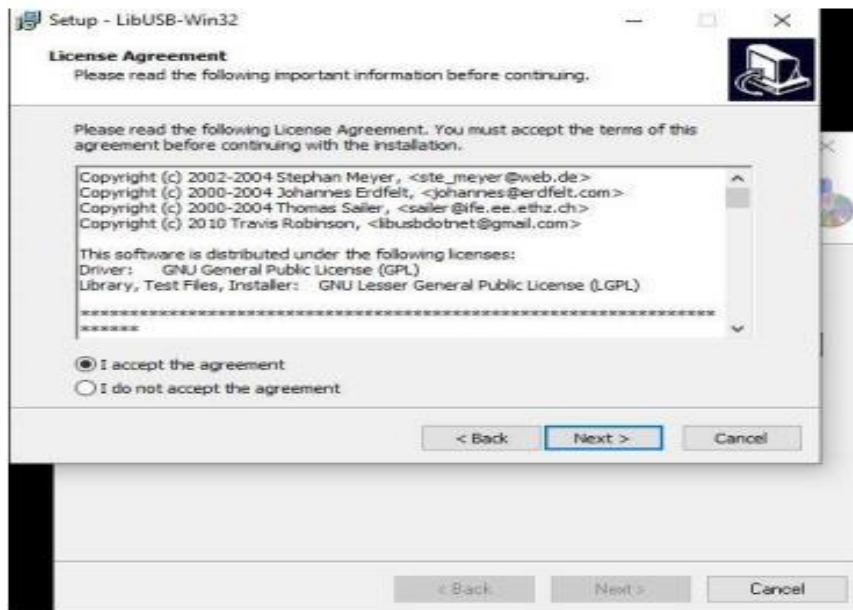


4. Again Press NEXT button from Confirm installation field

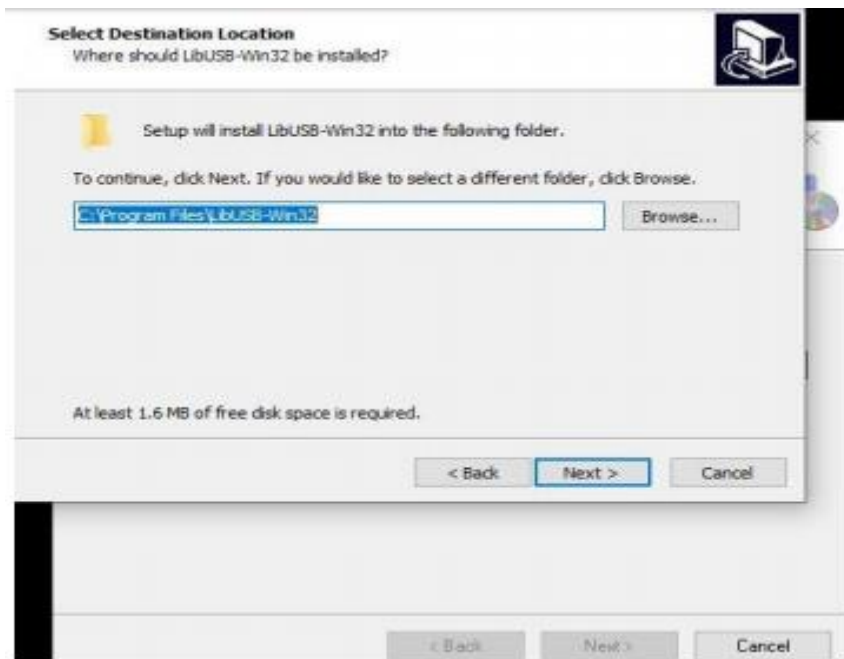


5. Then Utility will install and we have to click on NEXT button from “LIBUSB-WIN32 SETUP WIZARD”.

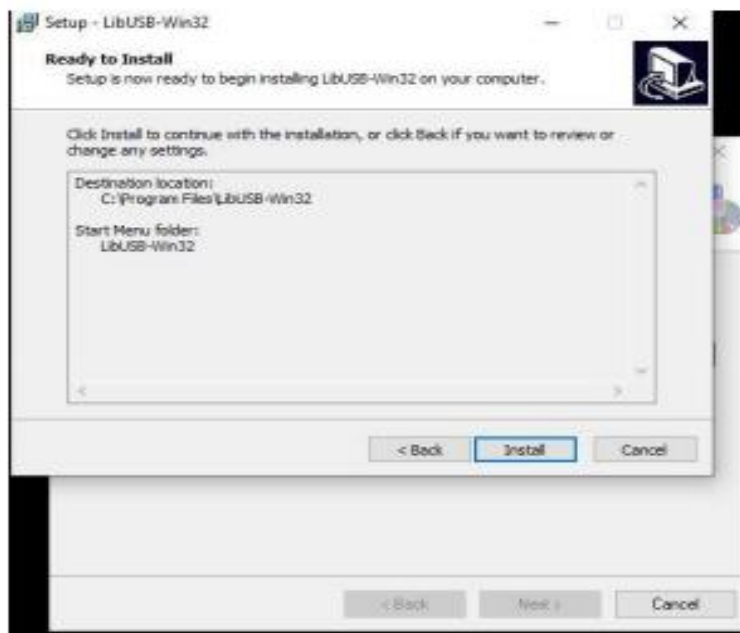
6. Then click on “I accept the agreement and press NEXT button.



7. Again Press NEXT button.
8. Again press NEXT button.



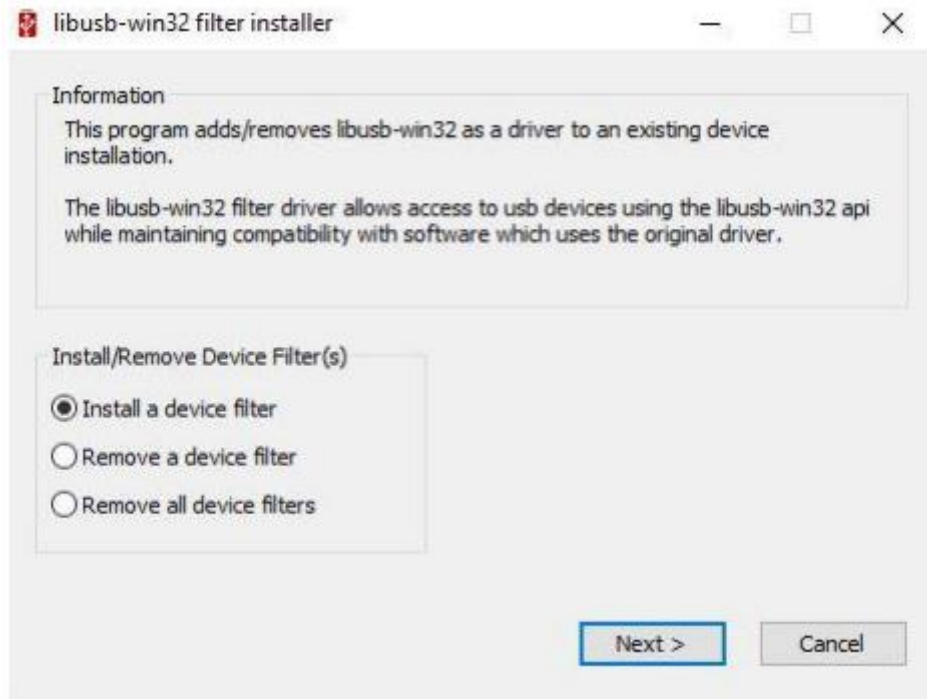
9. Again press NEXT button.
10. Then Click on install button.



11. Then click on FINISH button.



12. Now, select Install a device filter option and press NEXT button.



13. Then connect Machine with the PC through USB cable and put machine on Data Download mode. Then select “USB Printing Support” option and click on install button.

14. Then installation will complete and a Pop up will occur. Click on CLOSE button and your Utility will be installed.

For 64 bit windows, we need to install “BP Gold v2.0 Setup x64” setup. Procedure:
For 64 bit Windows, follow same steps up-to step 11 as mentioned for 32 bit windows.

- Press CANCEL key at device filter option.
- Then Press CLOSE button and your Utility will be installed.



OVER 30 YEARS IN PRINTING TECHNOLOGY

EXCLUSIVELY FOR JEWELLERY STORES

WeP.BP GOLD 2.0 UTILITY

CELEBRATING 100 THOUSAND CUSTOMER SMILES WITH WeP BILLING PRINTERS

- COMPACT AND EASY TO USE
- LASER PRINTER CONNECTIVITY OVER WIFI
- AUTO CALCULATION OF VARIOUS VARIABLES
- REPORTS ARE HELPFUL FOR GST FILING

Click To Continue



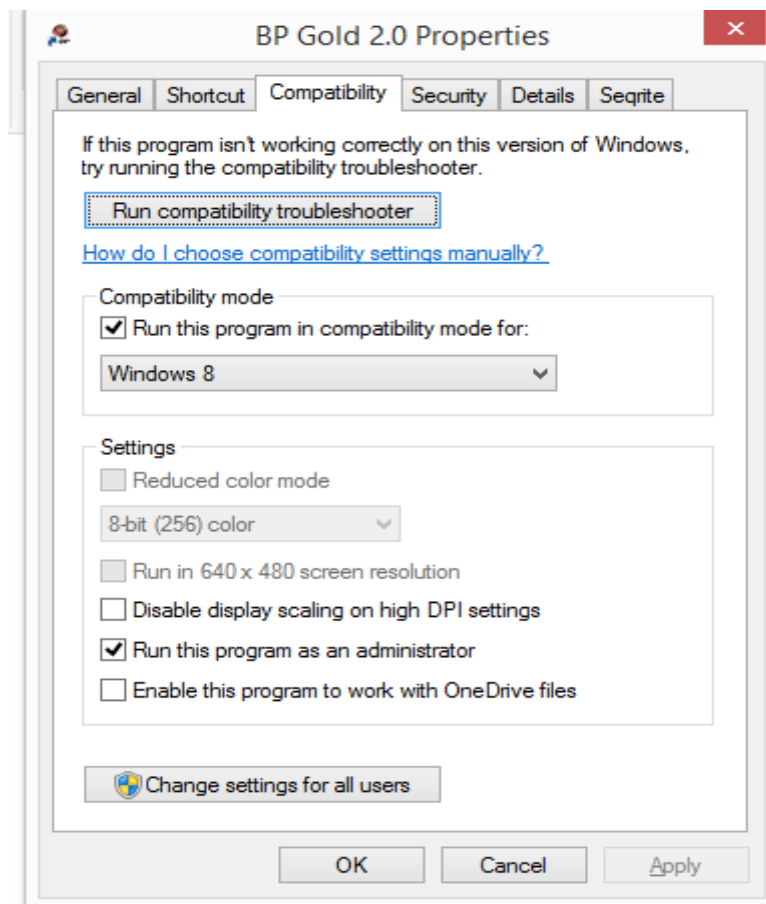
Technical Communication No. 02
Date of Release: 12th Jun 2021
Model Covered:BP Gold 2.0

Item database updating Through User Utility in BP Gold 2.0

Introduction: In Our BP printers we can add Item database in bulk through its User Utility. This Technical Communication will guide us how to add item database in Printer with help of its User Utility.

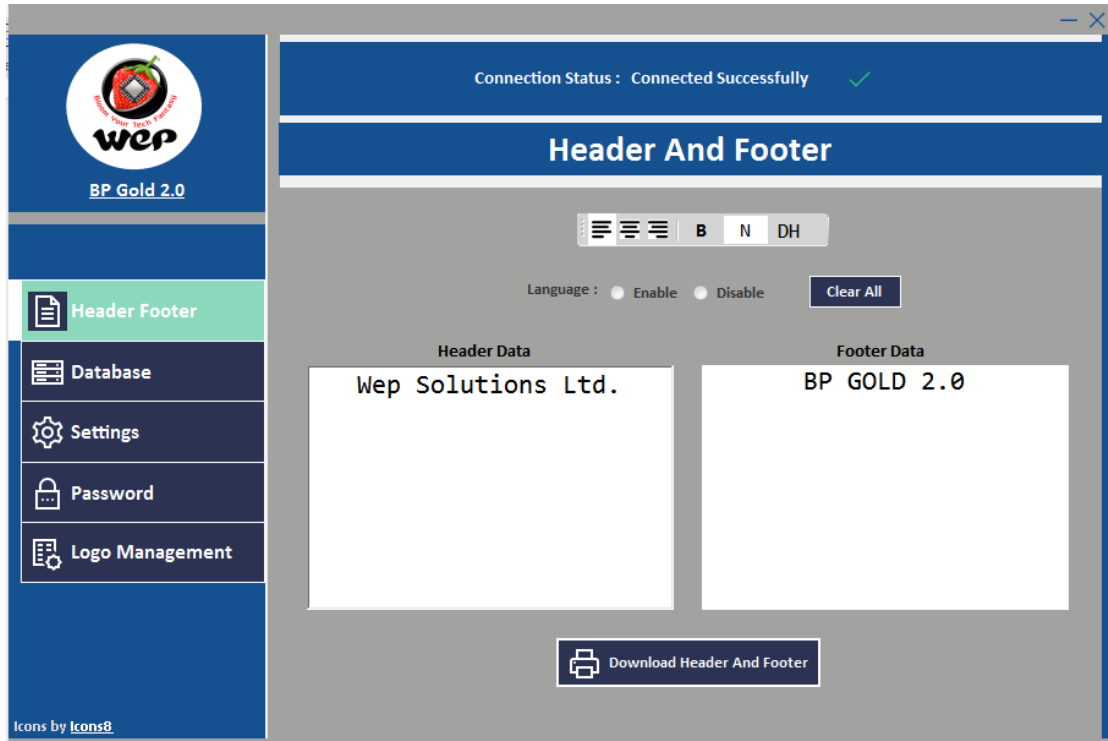
Connect the Printer to PC through its USB cable and put it in data downloading mode. (Press and hold Offline/Feed button then Switch on Printer, It will goes to Data Downloading mode. Press Enter to proceed the same.)

- Go to BP Gold 2.0 Utility Setup and open it.
- Open the utility in run as administrator mode-
Right Click on Utility-Go to properties-compatibility-tick Run as administrator-Apply

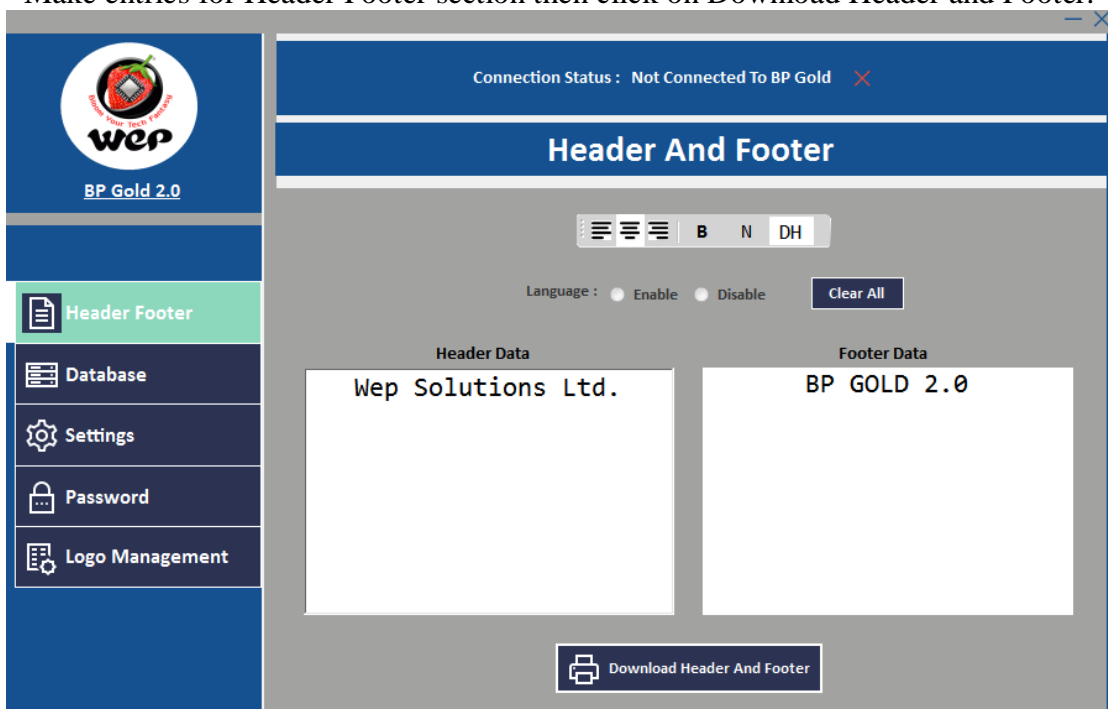




- Open the utility and enter its password “wepindia” and click on the log in



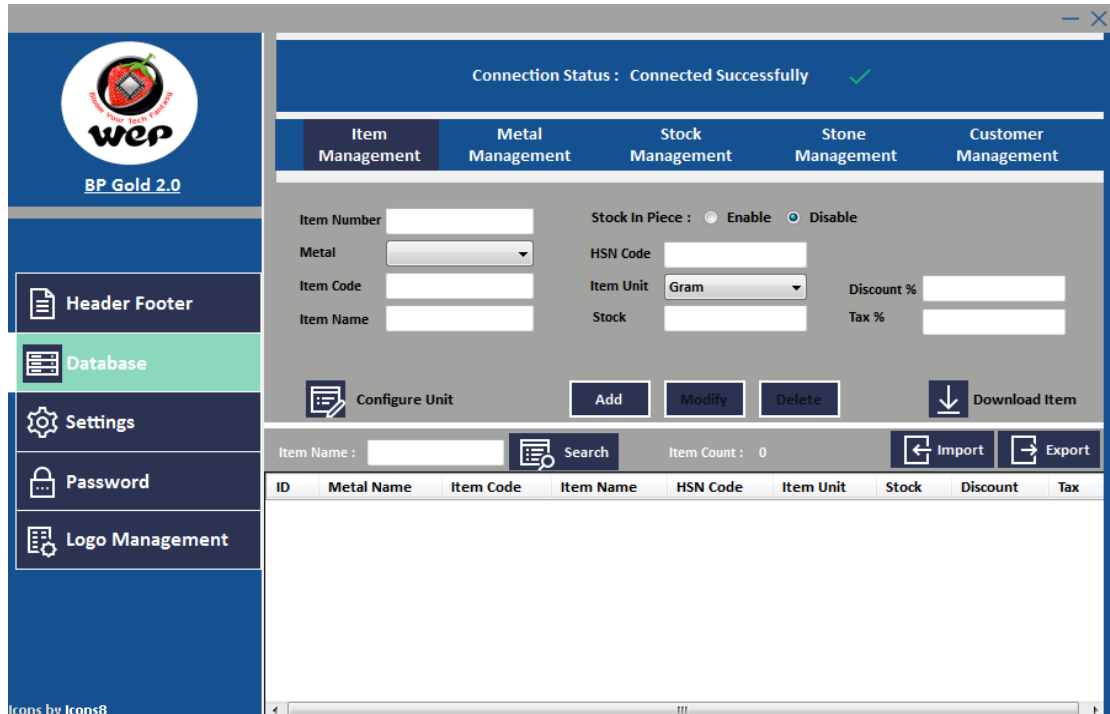
1. Header and Footer: Under this section we can add Header and Footer to our Printer. Make entries for Header Footer section then click on Download Header and Footer.





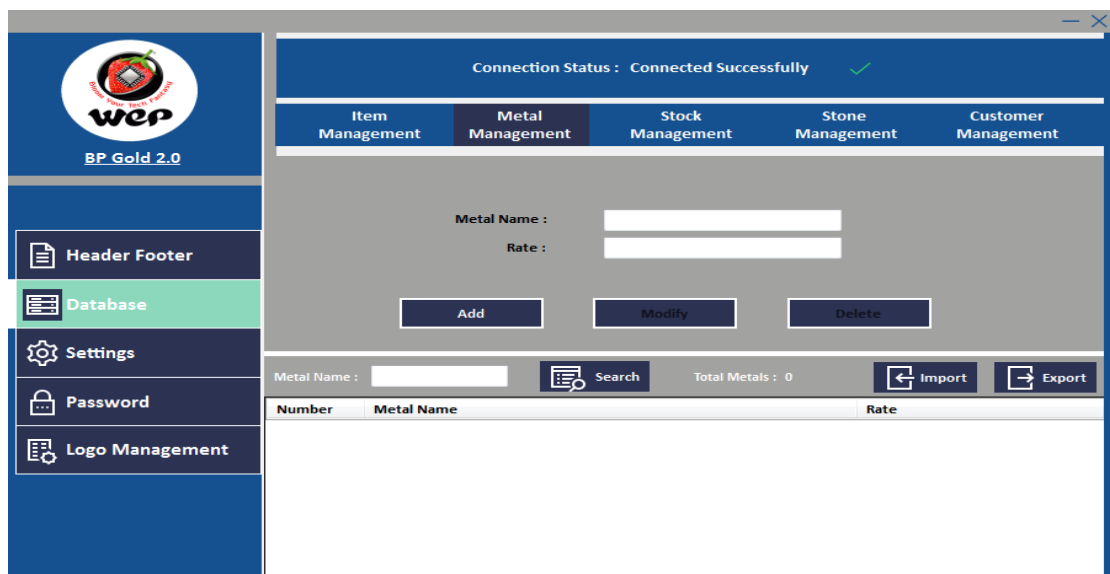
2. Item database Entry : To add item database we have to make entries for its Metal Management.

Go to Metal Management and make entries for Metal type and its various rates.



We can take its excel format for addition on n number of entries, Follow below process to export and import of excel file.

- Make an entry for single Metal Name and then Export file through its Export section.
- Add details in exported file and then Import back it to utility.
- This section helps us to make n number of entries through excel operations.





Go to Item management section and then put Item Number, Metal, Name, unit, stock, HSN, Discount, Tax. Then click on Add option

Connection Status : Connected Successfully ✓

Item Management Metal Management Stock Management Stone Management Customer Management

Item Number Stock In Piece : Enable Disable

Metal HSN Code

Item Code Item Unit Discount %

Item Name Stock Tax %

Item Name : Search Item Count : 1

ID	Metal Name	Item Code	Item Name	HSN Code	Item Unit	Stock	Discount	Tax
1	GOLD	111	CHIN RING GOLD	83346777	Gram	0	10	12

Icons by Icons8

Export the Database file to its excel format, make entries for remaining data you want to upload and import it back.

Once all the database entries shown in Utility setup click on Download Item option, We can get the database file in pen drive and upload the same to printer



Technical Communication No. 03
Date of Release: 25th Sep 2021
Model Covered : BP Gold 2.0

How to Upgrade Firmware in BP Gold 2.0

Introduction: This Technical communication will Guide us How to Upgrade Firmware in BP Gold 2.0 Printer. We have required a PC and USB connectivity cable to upgrade the firmware in our Printer.

Go through below process of Firmware upgradation

1. Connect the Printer to your PC through USB connectivity cable.
2. Switch on the Printer Holding the **FEED** button. Display Screen will show as.



3. Press Down arrow Key and Printer will comes to Firmware Download mode and it will display as

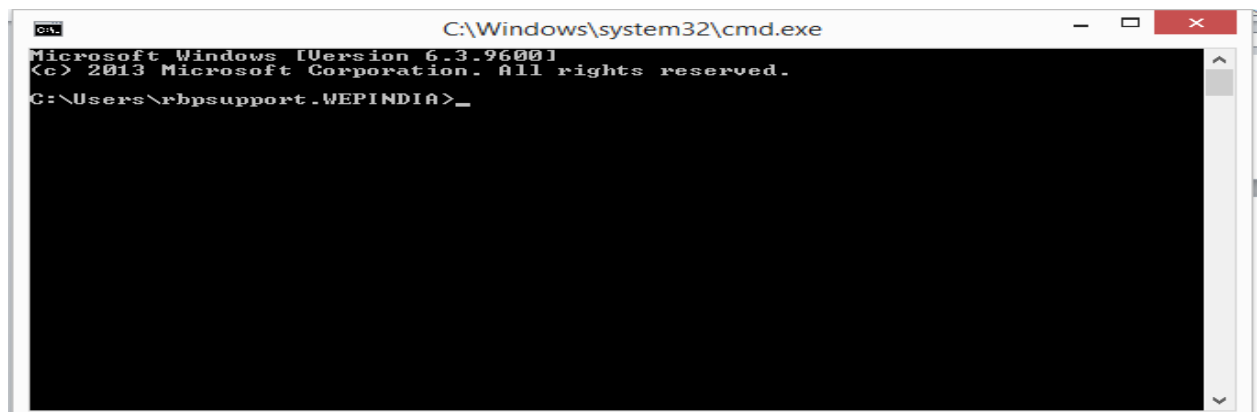


3. Press enter key to get enter in Firmware Download Mode, Printer will ask for a Firmware Up gradation password. Enter the password **15396** and now Printer is ready to receive data from PC and Display will show as.



4. Go to command prompt in your PC and follow below commands for Firmware up gradation in BP Emerge Basic Printer.

Note: USB printing.exe file and Firmware File should be available on your Desktop.





5.Type a command as cd desktop and Press enter.

6.Now type USB and press TAB Button, Screen will display as UsbPrinting.exe

```
C:\Windows\system32\cmd.exe
Microsoft Windows [Version 6.3.9600]
(c) 2013 Microsoft Corporation. All rights reserved.
C:\Users\rbpsupport.WEPINDIA>cd desktop
C:\Users\rbpsupport.WEPINDIA\Desktop>UsbPrinting.exe_
```

7. Give space and type the firmware file name, then again give a space and type prn.

8. Press enter and Printer will display as F/W upgrading please wait.

9. After completion of the above process you can take a self-test of Printer to know the current. Firmware version and verification of the firmware Up gradation.



Technical Communication No. 04
Date of Release: 26th Mar 2022
Model Covered : BP Gold 2.0

External Printer connectivity with BP Gold 2.0

Introduction: In BP Gold 2.0 we are providing the facility of Invoice printing through external printer also. This technical communication will guide us about external printer connectivity with BP Gold 2.0 printer.

REQUIREMENTS:-

1. Ethernet cable (Internet enabled) for the External printer.



Fig 1 Ethernet cable

2. 2.4 GHz Wi-Fi connectivity (Internet enabled) for BP Gold 2.0.

PROCEDURE:-

External Printer Steps: -


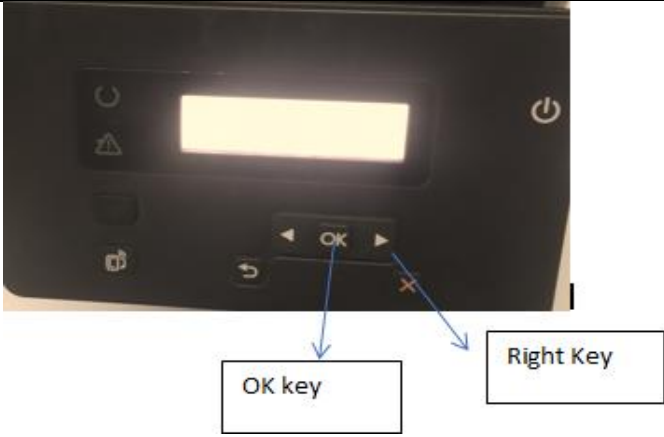

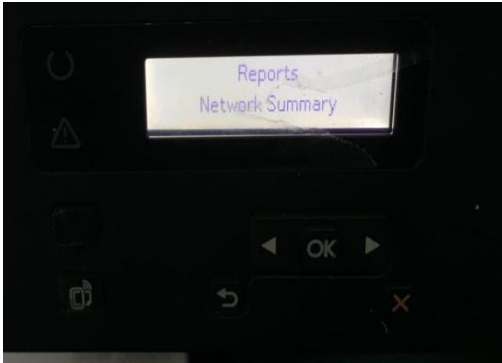
Step No.	Task Name	Procedure
1	Connectivity of Ethernet cable	Turn on the external printer and connect the Ethernet cable to the external printer. 

Fig 2 Highlighted area is Ethernet port for connectivity



2	Network Summary to get the IP Address	 <p>Fig 3 navigation keys of screen</p> <p>1. Take a network summary, Press the right arrow key twice and then click OK on Reports</p>  <p>Fig 4 Screen showing Reports</p> <p>2. Then press, right arrow key 4 times and then select OK to print Network Summary.</p>  <p>Fig 5 Screen showing Network Summary</p> <p>3. Now go to TCP/IP(v4) section of network summary, then note down IPv4 address.</p>
---	---------------------------------------	--



		<p>HP LaserJet Pro M202dw Network Summary</p> <p>TCP/IP(v4)</p> <ul style="list-style-type: none"> IP Address: 192.168.1.1 Subnet Mask: 255.255.255.0 Default Gateway: 192.168.1.1 IP Configured By: DHCP IP Preferring Address Method: DHCP DHCP/BOOTP Server: 192.168.1.1 IP Server: Not Specified DHCP Expiration Time: 00:00:00 (Days:Hours:Minutes) WDS Server: Not Specified Preferred DNS Address: 192.168.1.1 Alternate DNS Address: Not Specified <p>Network Identification</p> <ul style="list-style-type: none"> Host Name: NP000902 Domain Name (IPv4/IPv6): Domain Name (IPv6 only): Bonjour Service Name: HP LaserJet Pro M202dw (ESN/STY): NP000902 (Socket) Bonjour Domain Name: NP000902 (Socket) Bonjour Highest Priority Service: IPP Printing <p>Wireless Network Configuration</p> <ul style="list-style-type: none"> Status: Not Connected Wireless: OFF Network Name (SSID): unconfigured Communication Mode: Infrastructure Authentication Mode: Infrastructure Open System (no authentication): Encryption: None Hardware Address: 90:3D:4B:3D:74:32 <p>System</p> <ul style="list-style-type: none"> Server IP: Not Specified Server Port: 514 Max Messages Per Minute: 20 Max Message Priority: 1 Facility: LPR Server Connection Type: LPR <p>TCP/IP(v6)</p> <ul style="list-style-type: none"> Status: Ready Link Local Address: FE80::52B:97F:FE0C:5872 Stateless (From Router): Not Specified Stateful (From DHCPv6): Not Specified Preferred DNS Address: Not Specified Alternate DNS Address: Not Specified <p>Wired Network Configuration</p> <ul style="list-style-type: none"> Status: Connected Hardware Address: 94:39:09:0C:59:72 Link Speed and Duplex Negotiation: Automatic Link Speed: 100 Mbps Duplex: Full <p>Wireless Direct Setup</p> <ul style="list-style-type: none"> Status: Enabled Wireless Direct Name (SSID): HP Direct-57 LaserJet Pro M202dw Channel: 6 IP Address: 192.168.202.1 Security: Disabled PSK/PMK-256: Not Specified <p>SNMP</p> <p>SNMPv1/v2</p> <ul style="list-style-type: none"> Status: Read-Write Access Enabled Set Community Name: Not Specified (Defaults to 'public') Get Community Name: Not Specified (Defaults to 'public') <p>SNMPv3</p> <ul style="list-style-type: none"> Status: Disabled <p>Network Statistics</p> <ul style="list-style-type: none"> Total Packets Received: 276 Unicast Packets Received: 2 Rel Packets Received: 0 Framing Errors Received: 0 Total Packets Transmitted: 55 Unicast Packets: 3 Transmit Collisions: 0 Transmit Late Collisions: 0 WDS-Print Jobs: 0
<p align="center">Fig 6 Highlighted area is IPv4 Address</p>		

Step No.	Task Name	Procedure
3	Connectivity of 2.4 GHz Wi-Fi to BP Gold 2.0	<p>Turn on BP Gold 2.0, login the machine. Follow the procedure mentioned below:</p> <ol style="list-style-type: none"> 1. Press the MENU (yellow colored key) 2. In BP Gold 2.0 screen, navigate to MACHINE SETTINGS and then press ENTER key. <p>Fig 7 Screen showing Machine settings</p> <ol style="list-style-type: none"> 3. Navigate to WiFi SETTINGS option and then press ENTER key.






		<p>Fig 8 Screen showing Wi-Fi settings</p> <p>4. Navigate to CONNECTION SETTINGS and then press ENTER key, then enter Wi-Fi name in the SSID field, then press ENTER key (green key) and then enter Wi-Fi password in PASSWORD field, then click ENTER key (green key).</p>  <p>Fig 9 Screen showing Connection settings option</p>  <p>Fig 10 Screen showing to enter Wi-Fi SSID and Password fields</p>
4	Saving of IP address of External printer in BP Gold 2.0	<p>1. Press the MENU (yellow colored key)</p> <p>2. In BP Gold 2.0 screen, navigate to MACHINE SETTINGS and then press ENTER key.</p>  <p>Fig 11 Screen showing Machine settings</p> <p>3. Navigate to IP ADDRESS option and then press ENTER key.</p>



Fig 12 Screen showing IP Address

4. Enter IP address of External printer in E.IP field (which we get in STEP 2 of External Printer Steps).

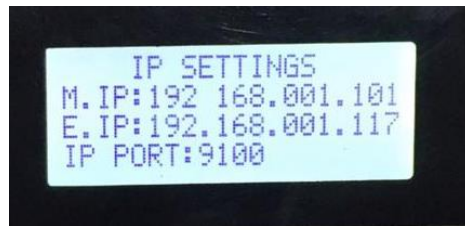


Fig 13 Screen showing to enter IP of external printer in E. IP input field

5. Enter 9100 in IP PORT option and then press ENTER key and then Machine will reboot.

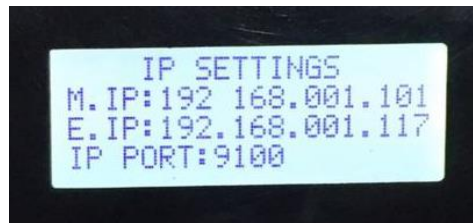


Fig 14 Screen showing to enter PORT in IP PORT input field



5	Types of bills to print on External Printer	<p>1. Press the MENU (yellow colored key)</p> <p>2. In BP Gold 2.0 screen, navigate to MACHINE SETTINGS and then press ENTER key.</p> <p>3. Navigate to EXT. PRINT OPTION and then press ENTER key.</p> <p>4. In EXT. PRINT OPTION, there are 4 options which are mentioned below: -</p> <ul style="list-style-type: none"> • DISABLE- To disable the printing of bill on external printer • ALL BILL ON EXT- To print all types of bills (Estimation/Final) on external printer • FINAL BILL ON EXT- To print only FINAL bills <div data-bbox="667 898 1358 1290" data-label="Image"> <table border="1"> <thead> <tr> <th>SL</th> <th>ITEM NAME</th> <th>METAL TYPE</th> <th>HSN CODE</th> <th>WEIGHT</th> <th>RATE</th> </tr> </thead> <tbody> <tr> <td>1</td> <td>1</td> <td>1</td> <td>11111111</td> <td>1100Gm</td> <td>1.00</td> </tr> <tr> <td colspan="5">PIECES</td> <td>100</td> </tr> <tr> <td colspan="5">AMOUNT</td> <td>110000.00</td> </tr> <tr> <td colspan="5">DISCOUNT AMOUNT</td> <td>1100.00</td> </tr> <tr> <td colspan="5">CGST @ 5.00%</td> <td>5445.00</td> </tr> <tr> <td colspan="5">SGST @ 5.00%</td> <td>5445.00</td> </tr> <tr> <td colspan="5">TOTAL</td> <td>119790.00</td> </tr> </tbody> </table> </div> <p>Fig 15 Final bill</p> <ul style="list-style-type: none"> • ESTI BILL ON EXT- To print only Estimation bills <div data-bbox="683 1424 1401 1917" data-label="Image"> <table border="1"> <thead> <tr> <th>SL</th> <th>ITEM NAME</th> <th>METAL TYPE</th> <th>HSN CODE</th> <th>HUID</th> <th>WEIGHT</th> <th>RATE</th> </tr> </thead> <tbody> <tr> <td>1</td> <td>1</td> <td>1</td> <td>11111111</td> <td>111111</td> <td>1Gm</td> <td>1.00</td> </tr> <tr> <td colspan="5">PIECES</td> <td>2</td> <td></td> </tr> <tr> <td colspan="5">AMOUNT</td> <td>2.00</td> <td></td> </tr> <tr> <td colspan="5">DISCOUNT AMOUNT</td> <td>0.02</td> <td></td> </tr> <tr> <td colspan="5">CGST @ 5.00%</td> <td>0.10</td> <td></td> </tr> <tr> <td colspan="5">UTGST @ 5.00%</td> <td>0.10</td> <td></td> </tr> <tr> <td colspan="5">TOTAL</td> <td>2.25</td> <td></td> </tr> <tr> <td colspan="7">TOTAL ROUND OFF TO 0.25</td> </tr> <tr> <td colspan="7">ADVANCE RECEIVED : 6.00</td> </tr> <tr> <td colspan="7">BALANCE AMOUNT : -3.75</td> </tr> <tr> <td colspan="7">SALES PERSON NAME : MANAGER</td> </tr> </tbody> </table> </div> <p>Fig 16 Estimation bill</p>	SL	ITEM NAME	METAL TYPE	HSN CODE	WEIGHT	RATE	1	1	1	11111111	1100Gm	1.00	PIECES					100	AMOUNT					110000.00	DISCOUNT AMOUNT					1100.00	CGST @ 5.00%					5445.00	SGST @ 5.00%					5445.00	TOTAL					119790.00	SL	ITEM NAME	METAL TYPE	HSN CODE	HUID	WEIGHT	RATE	1	1	1	11111111	111111	1Gm	1.00	PIECES					2		AMOUNT					2.00		DISCOUNT AMOUNT					0.02		CGST @ 5.00%					0.10		UTGST @ 5.00%					0.10		TOTAL					2.25		TOTAL ROUND OFF TO 0.25							ADVANCE RECEIVED : 6.00							BALANCE AMOUNT : -3.75							SALES PERSON NAME : MANAGER						
SL	ITEM NAME	METAL TYPE	HSN CODE	WEIGHT	RATE																																																																																																																																	
1	1	1	11111111	1100Gm	1.00																																																																																																																																	
PIECES					100																																																																																																																																	
AMOUNT					110000.00																																																																																																																																	
DISCOUNT AMOUNT					1100.00																																																																																																																																	
CGST @ 5.00%					5445.00																																																																																																																																	
SGST @ 5.00%					5445.00																																																																																																																																	
TOTAL					119790.00																																																																																																																																	
SL	ITEM NAME	METAL TYPE	HSN CODE	HUID	WEIGHT	RATE																																																																																																																																
1	1	1	11111111	111111	1Gm	1.00																																																																																																																																
PIECES					2																																																																																																																																	
AMOUNT					2.00																																																																																																																																	
DISCOUNT AMOUNT					0.02																																																																																																																																	
CGST @ 5.00%					0.10																																																																																																																																	
UTGST @ 5.00%					0.10																																																																																																																																	
TOTAL					2.25																																																																																																																																	
TOTAL ROUND OFF TO 0.25																																																																																																																																						
ADVANCE RECEIVED : 6.00																																																																																																																																						
BALANCE AMOUNT : -3.75																																																																																																																																						
SALES PERSON NAME : MANAGER																																																																																																																																						



		<p>Navigate to any option mentioned above and Press ENTER key and then screen navigate to MACHINE SETTINGS, then press CANCEL key (red colored) 3 times to navigate to BILL MODES.</p>
--	--	--



Technical Communication No. 05
Date of Release: 11th Jun 2022
Model Covered: BP Gold 2.0

Firmware updates in BP Gold 2.0

Introduction : In Billing printer we do software updating based on customer feedback and additional features. In this technical note we will understand firmware updating process and details of latest firmware version of **BP Gold 2.0**

Updates given in latest Firmware of BP Gold 2.0 (1.1.1)

1. Less weight option has been implemented - Can be enabled by a setting in bill setting and works as discounted weight.
2. Less weight is implemented in Estimation , Final and Exchange billing routines.
3. Tax print option in estimation has been implemented - by default enabled and by disabling this option tax will not be printed in Estimation bill.
4. For Gram- "**Gm**" is replaced by "**gm**" in Billing and printing module.

Bug Corrected.

Printing wrong details as wastage and labour charges in Return billing has been rectified.

Procedure to update firmware: To update the firmware please go through Technical communication No. 3 (How to update firmware)

Regarding any Feedback and queries, kindly reach us on below:

Mail Id: rbp.support@wepindia.com

Toll Free Number: 8103 500 500

WhatsApp Number: +91-9148224129